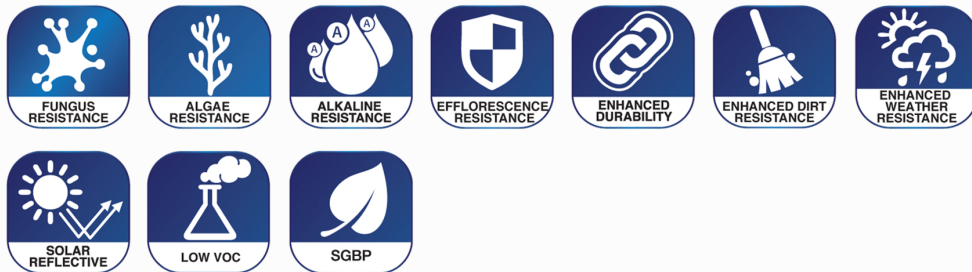




SolaReflect Si

SolaReflect Si combines the advantages of solar-reflective pigments with acrylic-silicone technology, delivering near-infrared (NIR) ray reflective properties with enhanced breathability and weathering resistance.

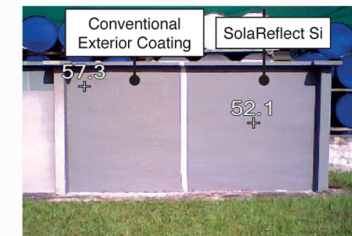
Characteristics



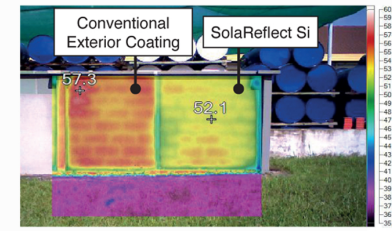
Resin	Acrylic-Silicone		
Type	Water-based		
Finishing	Low Sheen		
Application	Roller, Brush, Airless Spray		
Painting System	3-coat System	3-coat System	3-coat System (Designed for Fresh Plaster)
	1 coat SolaReflect Primer White	1 coat Watershield W350	1 coat ExpressKote
	2 coats SolaReflect Si	2 coats SolaReflect Si	2 coats SolaReflect Si

Thermo-Reading

Thermal Profile of Painted Wall, Fluke IR Fusion



Normal View of Painted Wall



Thermographic Reading Using Thermographic Imaging

Surfaces painted with SolaReflect Si present lower surface temperature profile than conventional exterior paint.