



## Bio-Glaze

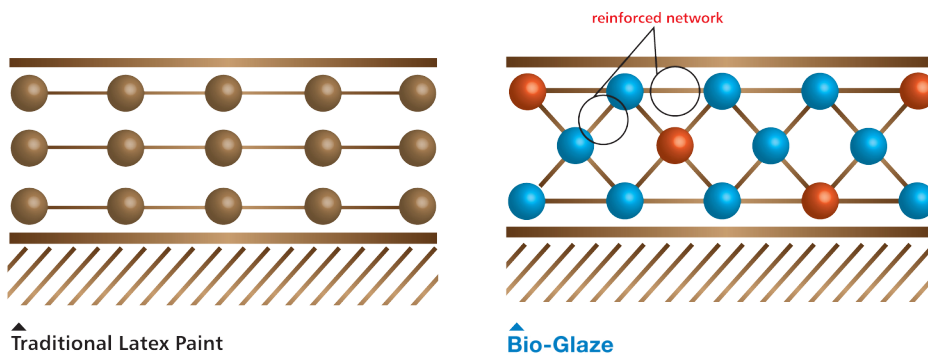
Bio-Glaze incorporates Polyurethane Dispersion (PUD) technology to provide a highly durable paint film that outperforms conventional latex polymer. With anti-bacterial and anti-fungal properties, Bio-Glaze is designed for use on internal masonry wall surfaces in schools, hospitals, operating theatres, and in all areas of the food processing industry. Its anti-bacterial formulation reduces exposure to bacteria such as *Methicilline Resistant Staphylococcus Aureus* (MRSA), *Escherichia Coli* (E.Coli) and *Staphylococcus Aureus* (S. Aureus).

### Characteristics



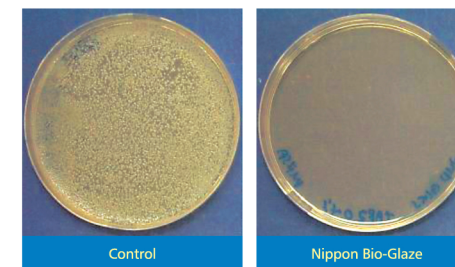
Resin	Polyurethane	
Type	Water-based	
Finishing	Gloss	
Application	Roller or Brush	
Painting System	<b>3-coat System</b>	<b>3-coat System</b>
	1 coat Vinilex 2000	1 coat ExpressKote
	2 coats Bio-Glaze	2 coats Bio-Glaze

### Molecular Structure of Traditional Latex Paint vs. Bio-Glaze



### Anti-Bacterial and Anti-Fungal Properties of Bio-Glaze

#### Bacterial Spore Resistance Test: MRSA



#### Fungal Spore Resistance Test: Aspergillus

